



Children's Social Care Performance

Year end - 2020/21

Scrutiny

Scrutiny

2020/21 Performance Summary

Referral: 77.7% of referrals received during 2020/21 were completed within 1 working day and 4.7% took over 3 working days to complete. Extensive work regarding referral enquiries has been required for some cases, resulting in completion taking longer than the statutory timescale. However, the additional work has been to the benefit of the child.

Re-Referrals: 19.1% of the children have been re-referred to Children's Social Care within 12 months of a previous referral. This is above the internal target of 18%, but below our statistical neighbour (20.8%), regional (22.4%) and national average (22.6%) (LAIT 2020).

Early Help: 623 Early Help Assessments have been completed during 2020/21.

Missing: Of the children and young people who are reported missing from home, 87.5% have been offered a return home interview within the 72-hour timescale. Where the co-ordinator cannot engage the child or young person, discussion takes place with parents, carers, teachers or social workers to offer insight around reducing the missing episodes. Of those who went missing 19.7% were a Child in Care.

Children & Families Assessments: 692 children had a single assessment carried out during 2020/21 with a rate of assessments as 308.2 per 10,000 of the population at the end of March 2021.

C&F Timeliness: Social workers completed 86.4% of the C&F assessments within timescale during 2020/21. This is in line with our statistical neighbour (87.7%) and regional average (88.8%) and above the national average (83.1%) as recorded for 2020 in the LAIT, but below our target of 90%.

Section 47 enquiries: 197 section 47 enquiries were started during 2020/21 involving 361 children, 7 of which were subject to a Child Protection plan (CP) at the time of the enquiry.

Child Protection Conference Timeliness: 94.4% of Initial Child Protection Conferences (ICPC) were held within 15 working days from the strategy meeting / section 47 being initiated, excluding transfer-in conferences, during 2020/21. Darlington's performance remains higher than our statistical neighbour (80.8%), regional (83.1%) and national average (77.6%) (LAIT 2020) and in line with internal target of 95%.

Child Protection Plans: 87 children were subject to a Child Protection plan (CP) as at the end of March 2021. This is comparable to the 85 children open to a plan at the end of March 2020. Darlington's rate equated to 38.8 per 10,000 population for children subject to a CPP which is lower than the regional average (70.0), statistical neighbour (53.9) and the national average (42.8) as reported in the 2020 LAIT.

100.0% of CP cases were allocated to a social worker and all the CP reviews were carried out in timescale. During 2020/21 there were no children ceasing CP who had been subject to the plan for 2 or more years. At the end of March 2021, the percentage of children becoming subject to a CP plan for a second or subsequent time within 2 years of the previous plan ending was 9.4%, above the 6% target.

Child Protection Statutory visits: 89.0% of children received a statutory Child Protection (CP) visit in 2020/21 within 10 working days, this is in line with our target of 90%.

Children in Care: 272 children are currently in care as at March 2021, which is comparable to the number of children (270) that were in care as at March 2020. During 2020/21 a total of 82 children came into the care of the Local Authority, which is lower than in 2019/20 (109). During 2020/21, 80 children ceased to be in care.

Children in Care Reviews: 100.0% of Children in Care (CiC) were allocated to a qualified social worker. 99.6% of the reviews have been completed within required timescales during 2020/21.

Children in Care Statutory visits: 93.1% of statutory visits for Children in Care (CiC) were completed in timescale during 2020/21. This is an improvement compared to 2019/20 when there were 89.0% visits completed in timescale and above our internal target of 90%.

Children in Care Placements: 8.1% of Children in Care (CiC), as at March 2021, have had 3 or more placements within the previous 12 months. This is positively below the internal target (10%), national (10%), statistical neighbour (9.9%) and regional averages (10%) as recorded in the LAIT 2020. 71.9% of our Children in Care aged under 16 (who have been looked after for at least 2.5 years) have been in their current placement continuously for at least 2 years. This is positively above our target of 68.0% and our statistical neighbours (69.3%), regional (69.0%) and national average (68.0%). 9.4% of our Children in Care have been placed 20 or more miles away from home as at March 2021, which is similar to that at March 2020 (9.6%) and below our target of 10.0%. This relates to young people who have been placed in residential care due to their disability / placed with family / or placed for adoption, and this provision was not available within 20 miles.

Initial Health Assessments: 90.9% of the children, newly into care, were seen by CDDFT within 20 working days for an initial health assessment during 2020/21.

Health and Dental Reviews: 91.2% of children due a review health assessment by March 2021 have had one completed. This percentage is comparable to the end of 2019/20 (93.3%) and is above our 90% target.

As a result of dental surgery closures during national lockdowns, 57.2% of Children in Care, that were due a dental check assessment has had one completed. The percentage of children who have refused their medical checks has continued to decrease through the year, with 3.7% refusing their health review and 2.8% refusing their dental review. Although they are refusing, they are continually reminded of the benefits of having a check-up and encouraged to take part.

Care Leavers: 98.1% of care leavers were in suitable accommodation at the end of March 2021. The 1.9% of care leavers in unsuitable accommodation was due to being in custody. This is above our target of 95%.

The percentage of care leavers who were Not in Education, Employment or Training (NEET) continues to be positively below the target set of 30% at 24.6% at the end of March 2021.

REFERRALS - TIMELINESS

DEFINITION Percentage of referrals completed within 1 working day and over 3 working days. Referrals completed within 1 working day indicates that decisions regarding the services required are made in a timely manner to minimise drift and delay and to ensure that children are safe.

PERFORMANCE ANALYSIS

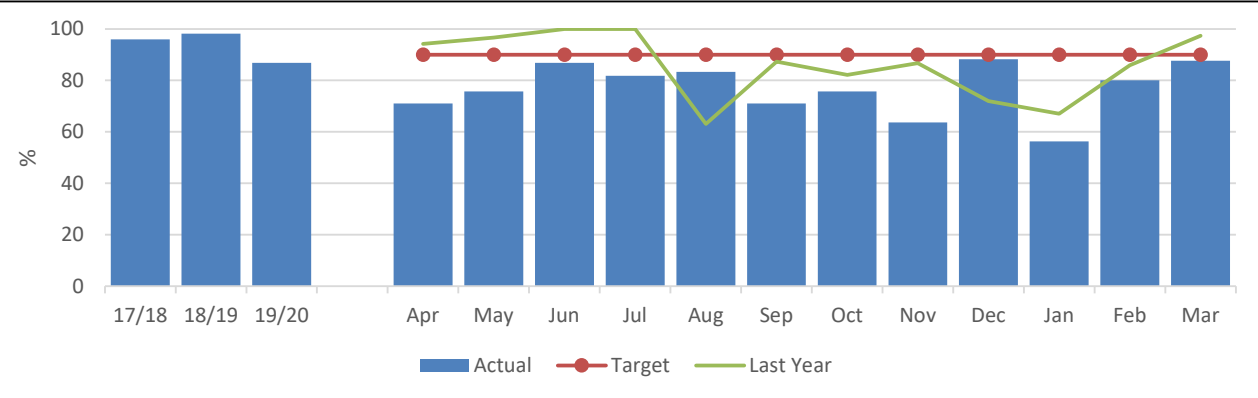
77.7% of referrals were completed within 1 working day during 2020/21 and 4.7% of the referrals took over 3 working days to complete.

All referrals that are not completed in timescale are reviewed each month by Team Managers. It has been noted that the majority of the delays have been a result of waiting for further information from third parties to make an informed decision or difficulties in contacting the families. All delays were confirmed being required and in the best interest of the family and children.

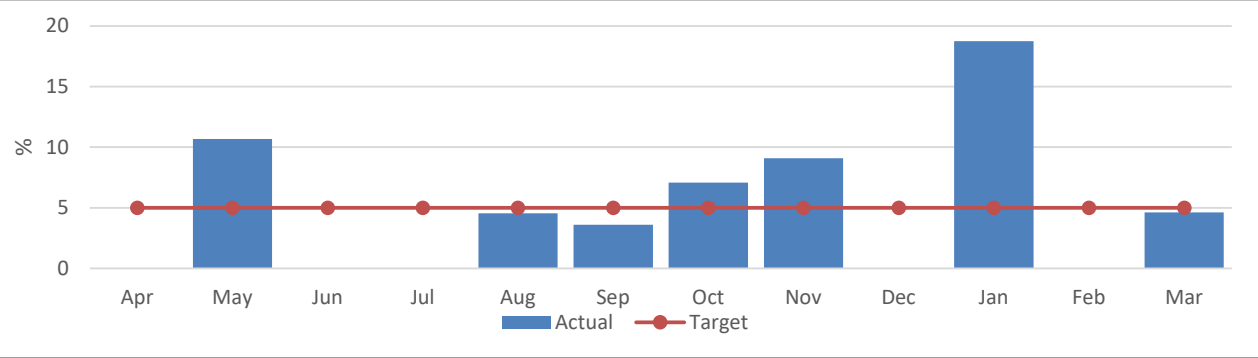
| CSC 022 | CSC 026 |
|--|--|
| Monthly % of referrals completed within 1 working day. | Monthly % of referrals completed in over 3 working days. |

| IN MONTH PERFORMANCE | Target | 90% | 5% |
|----------------------|--------|------|------|
| | Apr-20 | 71.1 | 0.0 |
| | May-20 | 75.7 | 10.7 |
| | Jun-20 | 86.8 | 0.0 |
| | Jul-20 | 81.8 | 0.0 |
| | Aug-20 | 83.3 | 4.6 |
| | Sep-20 | 71.1 | 3.6 |
| | Oct-20 | 75.8 | 7.1 |
| | Nov-20 | 63.6 | 9.1 |
| | Dec-20 | 88.2 | 0.0 |
| | Jan-21 | 56.3 | 18.8 |
| | Feb-21 | 80.0 | 0.0 |
| Mar-21 | 87.7 | 4.6 | |

CSC 022: Monthly % of referrals completed within 1 working day.



CSC 026: Monthly % of referrals completed in over 3 working days.



| ANNUAL TREND | 2017/18 | 96.0 | 1.8 |
|--------------|-------------|-------|------|
| | 2018/19 | 98.2 | 0.0 |
| | 2019/20 | 86.8 | 1.6 |
| | 2020/21 YTD | 77.7% | 4.7% |

REFERRALS - RE-REFERRALS

DEFINITION
 Percentage of re-referrals that are received within 12 months of a previous referral (based on referral start dates)
 A re-referral to Children's Social Care could be an indication that the previous referral was inappropriately closed down without addressing the initial concerns or issues.

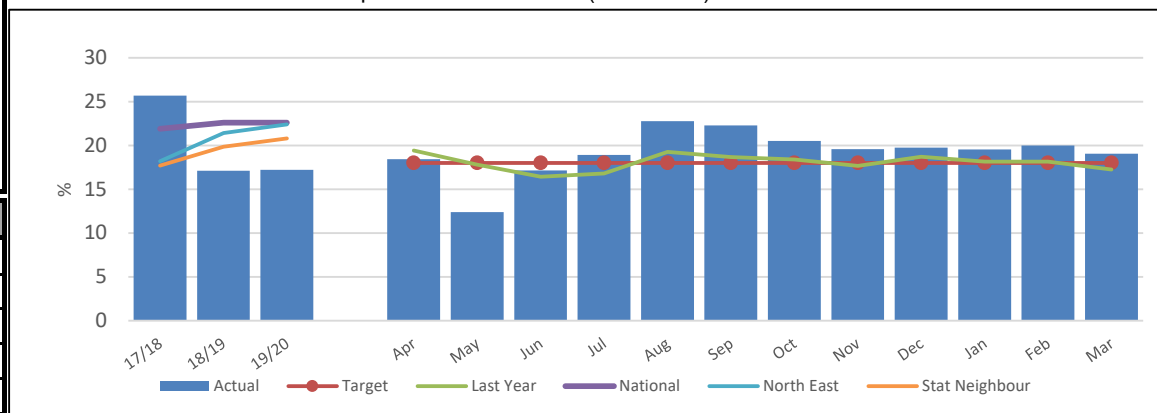
PERFORMANCE ANALYSIS
 143 re-referrals were made during 2020/21 period equating to 19.1% of our referrals being repeated within 12 months. This is a smaller cohort of children re-referred when comparing with 2019/20 (171), but due to the decrease in referrals (992 in 2019/20 to 750 in 2020/21) this has increased our rate.
 Although this has taken us above target of 18%, we remain below our statistical neighbour (20.8%), national (22.6%) and the regional average (22.4%), as recorded for 2020 in the LAIT.

| CSC 034 | CSC 032 | |
|---|--|--|
| Monthly number of re-referrals that are repeat within 12 months | % re-referrals that are repeat within 12 months (cumulative) | % of referrals that are re-referrals (monthly) |

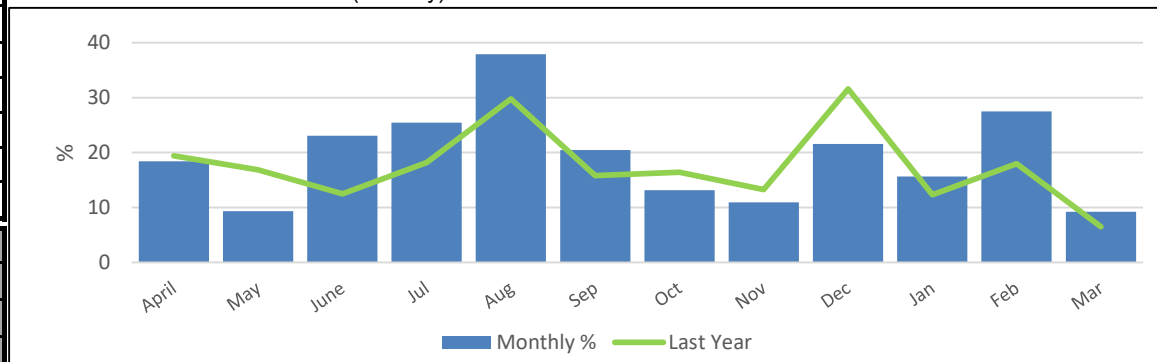
| IN MONTH PERFORMANCE | Target | | 18% | |
|----------------------|--------|------|------|------|
| | Apr-20 | 7 | 18.4 | 18.4 |
| | May-20 | 7 | 12.4 | 9.3 |
| | Jun-20 | 21 | 17.2 | 23.1 |
| | Jul-20 | 14 | 18.9 | 25.5 |
| | Aug-20 | 25 | 22.8 | 37.9 |
| | Sep-20 | 17 | 22.3 | 20.5 |
| | Oct-20 | 13 | 20.5 | 13.1 |
| | Nov-20 | 6 | 19.6 | 10.9 |
| | Dec-20 | 11 | 19.7 | 21.6 |
| | Jan-21 | 5 | 19.5 | 15.6 |
| | Feb-21 | 11 | 20.0 | 27.5 |
| Mar-21 | 6 | 19.1 | 9.2 | |

| ANNUAL TREND | 2017/18 | 247 | 25.7 | |
|--------------|-------------|-----|------|--|
| | 2018/19 | 205 | 17.1 | |
| | 2019/20 | 171 | 17.2 | |
| | 2020/21 YTD | 143 | 19.1 | |

CSC 032: % re-referrals that are repeat within 12 months (cumulative)



% of referrals that are re-referrals (monthly)



EARLY HELP ASSESSMENTS - STARTED

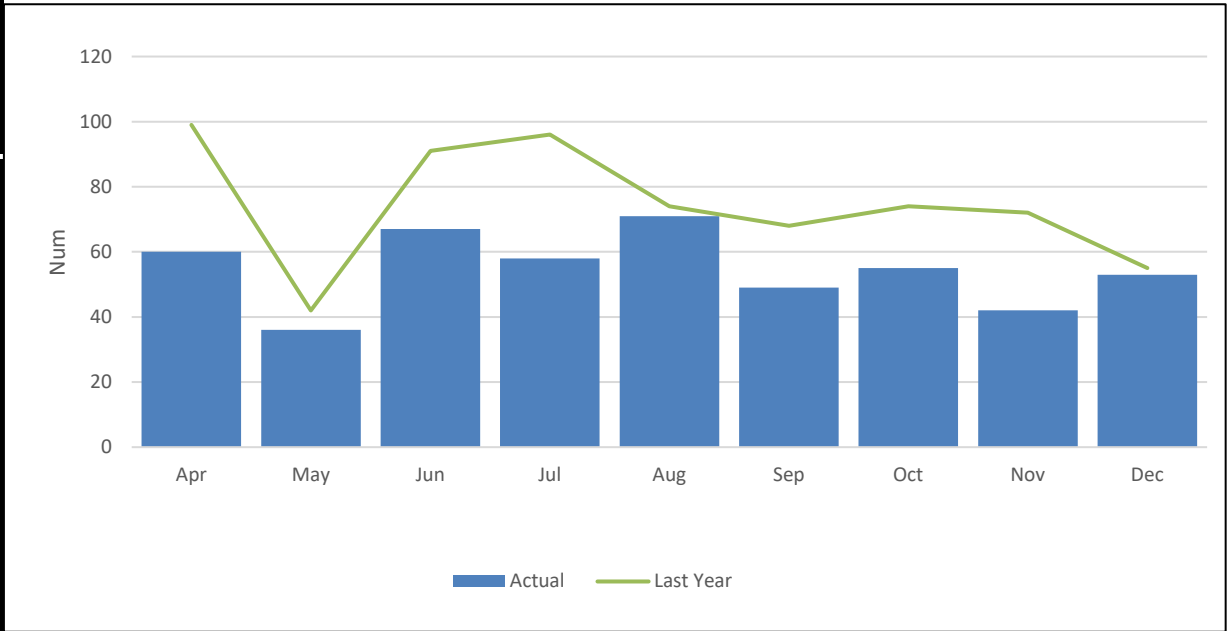
DEFINITION The number of individual Early Help Assessments (EHA) started in month and year to date, including those initiated by external agencies. The start date of the EHA is taken from the form created date in Liquid Logic and the start date of the external EHA is taken from the contact date when the agency informed us of the EHA.

PERFORMANCE ANALYSIS 623 Early Help Assessment's (EHA) were started during 2020/21 period which is a decrease on the 893 completed in 2019/20.

CSC 002
Total number of individual EHA's started in month (inc. external)

CSC 002: Total number of individual EHA's started in month (inc. external)

| IN MONTH PERFORMANCE | Target | |
|----------------------|--------|----|
| | Apr-20 | 28 |
| | May-20 | 46 |
| | Jun-20 | 58 |
| | Jul-20 | 60 |
| | Aug-20 | 36 |
| | Sep-20 | 67 |
| | Oct-20 | 58 |
| | Nov-20 | 71 |
| | Dec-20 | 49 |
| | Jan-21 | 55 |
| | Feb-21 | 42 |
| | Mar-21 | 53 |



| ANNUAL TREND | 2017/18 | 877 |
|--------------|-------------|-----|
| | 2018/19 | 869 |
| | 2019/20 | 893 |
| | 2020/21 YTD | 623 |

| MISSING EPISODES | |
|-----------------------------|--|
| DEFINITION | The number of episodes of children going missing in Darlington who are a Child in Care (CiC). |
| PERFORMANCE ANALYSIS | 30 Children in Care (CiC) were reported missing during 2020/21 with a total of 107 episodes. Where children are looked after by other authorities but cared for in Darlington, the ERASE Team have been alerted and provided with relevant information to ensure that the young people have been appropriately placed. |

| |
|---|
| CSC 246 |
| Number of missing relating to Children in Care with DBC |

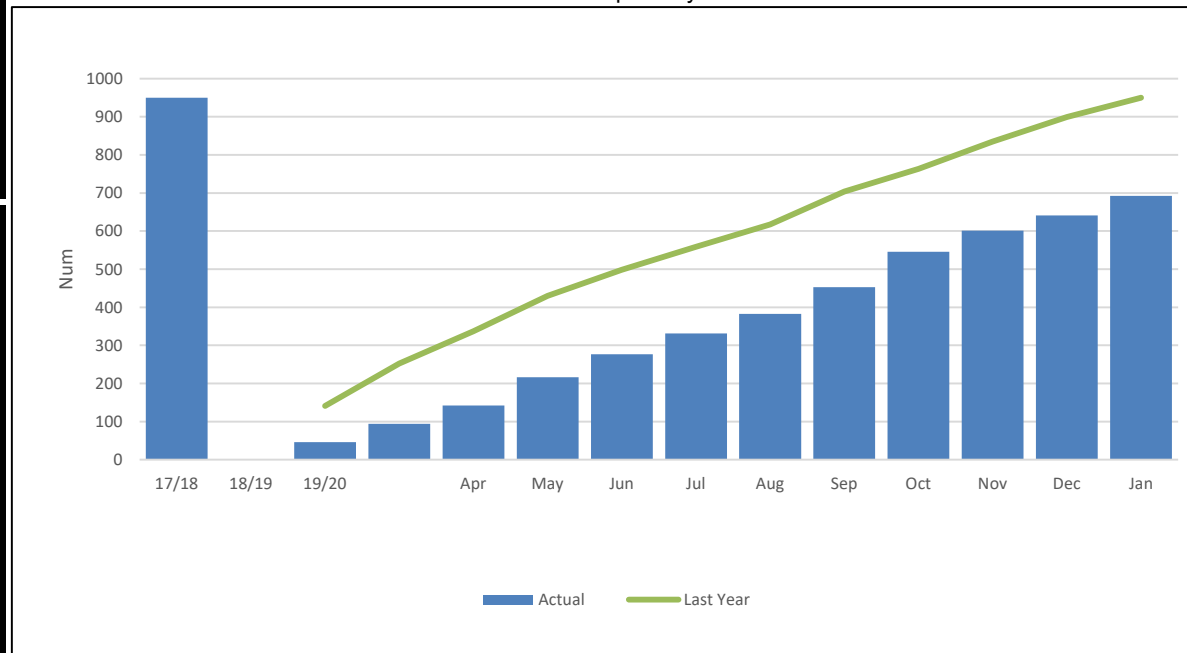
| IN MONTH PERFORMANCE | | Ep. | Child. |
|----------------------|--------|-----|--------|
| | Apr-20 | 9 | 5 |
| May-20 | 12 | 8 | |
| Jun-20 | 6 | 6 | |
| Jul-20 | 10 | 6 | |
| Aug-20 | 6 | 5 | |
| Sep-20 | 4 | 4 | |
| Oct-20 | 6 | 3 | |
| Nov-20 | 11 | 10 | |
| Dec-20 | 12 | 8 | |
| Jan-21 | 4 | 2 | |
| Feb-21 | 8 | 4 | |
| Mar-21 | 19 | 8 | |

| ANNUAL TREND child counted once | | | |
|---------------------------------|---------|-----|----|
| | 2018/19 | 199 | 36 |
| | 2019/20 | 129 | 24 |
| 2020/21 YTD | 107 | 30 | |

| ASSESSMENTS | |
|----------------------|--|
| DEFINITION | Monthly and cumulative number of Children & Families assessments completed |
| PERFORMANCE ANALYSIS | 692 C&F assessments have been completed in total throughout the 2020/21 period, a 27.2% decrease on the 950 completed throughout 2019/20. This has resulted in a 308.2 rate of C&F assessments completed per population. |

| |
|--|
| CSC 036 |
| Number of children & families assessments completed year to date |

CSC 036: Number of children & families assessments completed year to date



| | | |
|----------------------|-------------|-------|
| IN MONTH PERFORMANCE | Apr-20 | 46 |
| | May-20 | 94 |
| | Jun-20 | 142 |
| | Jul-20 | 216 |
| | Aug-20 | 277 |
| | Sep-20 | 331 |
| | Oct-20 | 383 |
| | Nov-20 | 453 |
| | Dec-20 | 546 |
| | Jan-21 | 601 |
| | Feb-21 | 641 |
| | Mar-21 | 692 |
| ANNUAL TREND | 2017/18 | 1,002 |
| | 2018/19 | 1,025 |
| | 2019/20 | 950 |
| | 2020/21 YTD | 692 |

ASSESSMENTS - TIMELINESS

| | |
|-------------------|---|
| DEFINITION | <p>Of those assessments completed in a period, the percentage completed within 45 working days. Day zero is the first working day on or after the start date of the referral, or strategy discussion decided to initiate S47 enquiries, or where new information indicates that an assessment should be undertaken. The end date is the first working day on or after the recorded date the Team Manager closes the single assessment.</p> <p>A process indicator as a proxy measure for improved child safety and how quickly services can respond when a child is thought to be at risk of serious harm. Local authorities should investigate and address concerns in a timely and efficient way.</p> |
|-------------------|---|

| | |
|-----------------------------|--|
| PERFORMANCE ANALYSIS | <p>86.4% of our C&F assessments were completed within 45 working days during the 2020/21 period. This is in line with our statistical neighbour (87.7%) and regional average (88.8%) and above the national average (83.1%) as recorded for 2020 in the LAIT, but below our target of 90%.</p> |
|-----------------------------|--|

| |
|---|
| CSC 038 |
| % C&F Assessments completed within 45 working days (Year to date) |

| | | |
|-----------------------------|---------------|------------|
| IN MONTH PERFORMANCE | Target | 90% |
| | Apr-20 | 71.7 |
| | May-20 | 62.8 |
| | Jun-20 | 75.4 |
| | Jul-20 | 77.8 |
| | Aug-20 | 81.6 |
| | Sep-20 | 80.4 |
| | Oct-20 | 81.5 |
| | Nov-20 | 83.7 |
| | Dec-20 | 85.4 |
| | Jan-21 | 85.9 |
| | Feb-21 | 86.3 |
| | Mar-21 | 86.4 |

| | | |
|---------------------|-------------|------|
| ANNUAL TREND | 2017/18 | 93.3 |
| | 2018/19 | 81.5 |
| | 2019/20 | 88.7 |
| | 2020/21 YTD | 86.4 |

SECTION 47 - STARTED

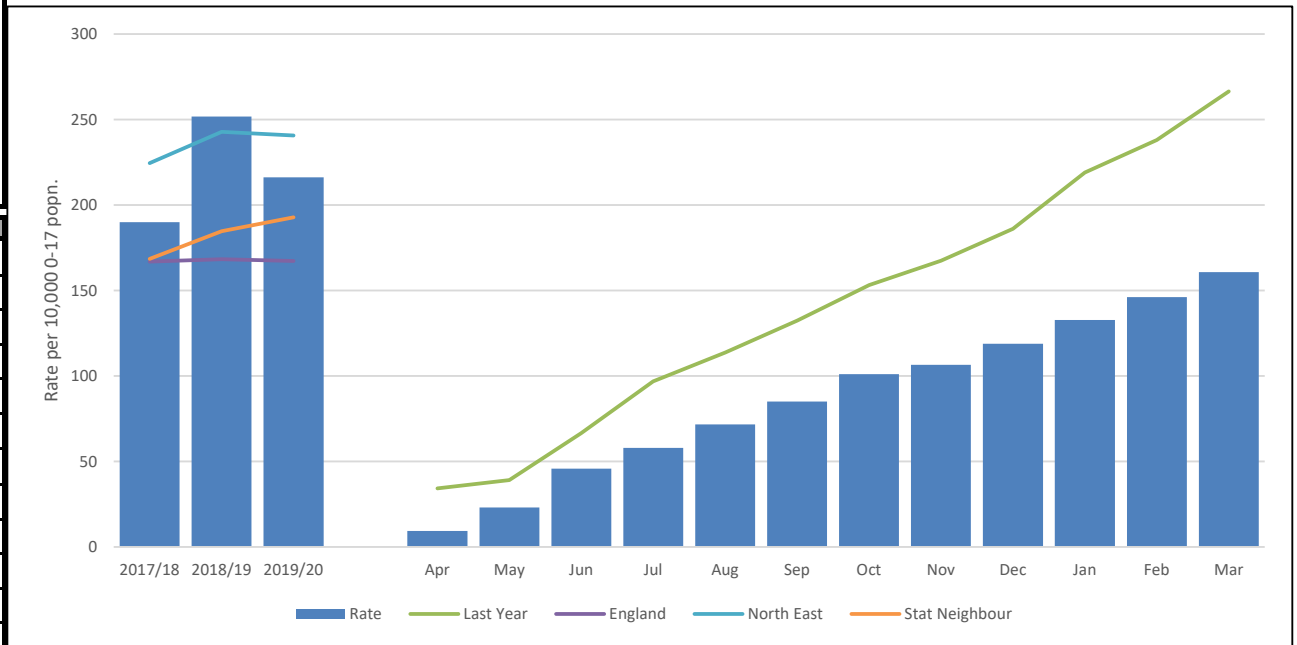
DEFINITION Number of children who have had a section 47 enquiries started monthly and year to date and the actual number of enquires started.

PERFORMANCE ANALYSIS 361 section 47 enquires were started during 2020/21. The rate of enquires started equates to 160.8, which is below our statistical neighbour (192.8), national (167.2) and regional average (240.6) as recorded for 2020 in LAIT.

| CSC 166 | CSC 164 |
|---|---|
| All children who had a section 47 enquires started in the month | Rate of section 47 enquiries started per 10,000 of the 0-17 population (Cumulative) |

| IN MONTH PERFORMANCE | | CSC 166 | CSC 164 |
|----------------------|----|---------|---------|
| Apr-20 | 21 | 9.4 | |
| May-20 | 31 | 23.2 | |
| Jun-20 | 51 | 45.9 | |
| Jul-20 | 27 | 57.9 | |
| Aug-20 | 31 | 71.7 | |
| Sep-20 | 30 | 85.1 | |
| Oct-20 | 36 | 101.1 | |
| Nov-20 | 12 | 106.4 | |
| Dec-20 | 28 | 118.9 | |
| Jan-21 | 31 | 132.7 | |
| Feb-21 | 30 | 146.1 | |
| Mar-21 | 33 | 160.8 | |

Rate of section 47 enquiries started per 10,000 of the 0-17 population (inc. children already on CPP)



| ANNUAL TREND | | CSC 166 | CSC 164 |
|--------------|-----|---------|---------|
| 2017/18 | 426 | 190.0 | |
| 2018/19 | 646 | 251.8 | |
| 2019/20 | 484 | 216.2 | |
| 2020/21 | 361 | 160.8 | |

INITIAL CHILD PROTECTION CONFERENCES - TIMELINESS

DEFINITION Of those ICPC's held within the period (excluding transfer ins), the percentage held within 15 working days of the S47 enquiry. Provides an indication of how quickly the safety of children who are judged to be continuing to, or likely to suffer significant harm is being considered by a multi-agency meeting.

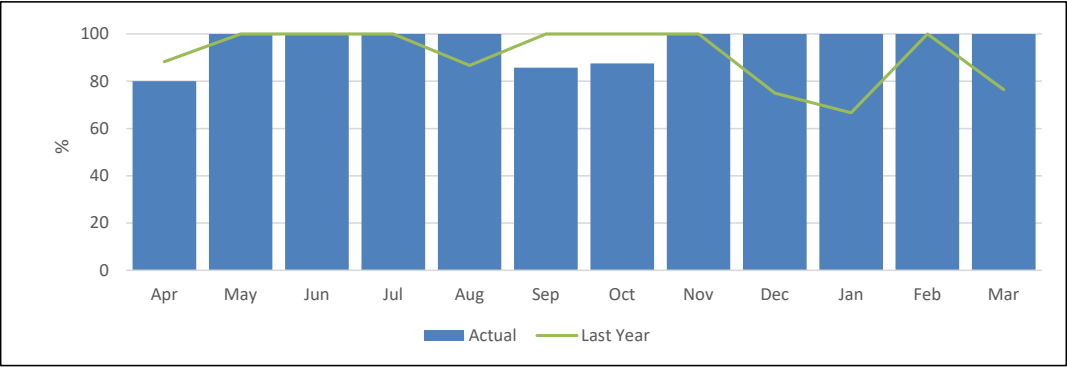
PERFORMANCE ANALYSIS 94.4% of Initial Child Protection Conferences (ICPC) were held within 15 working days from the strategy meeting / section 47 being initiated, excluding transfer-in conferences, during 2020/21.
There has been an improvement in the timeliness of the conferences when compared to 2019/20 (89.5%) and now in line with internal target of 95% and our performance remains higher than our statistical neighbour (80.8%), regional (83.1%) and national average (77.6%) as recorded for 2020 in the LAIT.

| CSC 178 | CSC 176 |
|---|--|
| Monthly % of cases recorded in the Safeguarding Unit workbook where Child Protection strategy meeting / S47 start to initial child protection conference (ICPC) are within 15 days (CPP). Excludes transfer-in conferences. | % of cases where the initial child protection conference (ICPC) was within 15 days of the initiating strategy discussion / S47 start recorded in the Safeguarding Unit workbook (CPP). This EXCLUDES transfer-in conferences. Year to Date |

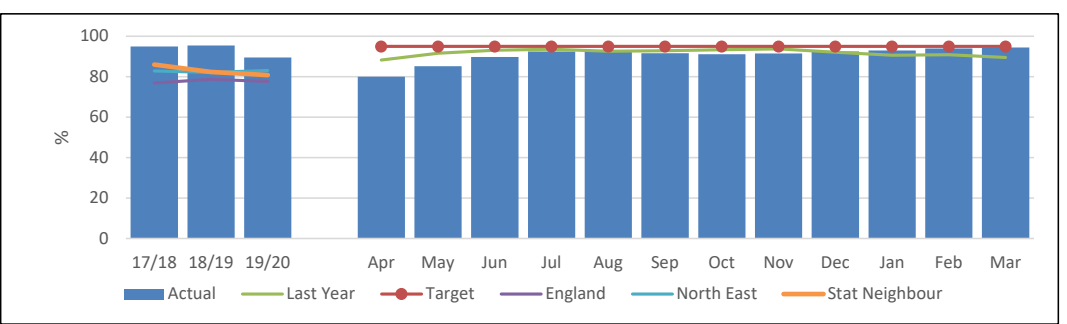
| IN MONTH PERFORMANCE | Target | 100 | 95 | |
|----------------------|--------|-------|-------|------|
| | Apr-20 | 80.0 | 80.0 | 80.0 |
| | May-20 | 100.0 | 100.0 | 85.2 |
| | Jun-20 | 100.0 | 100.0 | 89.7 |
| | Jul-20 | 100.0 | 100.0 | 92.5 |
| | Aug-20 | 100.0 | 100.0 | 93.0 |
| | Sep-20 | 85.7 | 85.7 | 91.6 |
| | Oct-20 | 87.5 | 87.5 | 91.1 |
| | Nov-20 | 100.0 | 100.0 | 91.5 |
| | Dec-20 | 100.0 | 100.0 | 92.5 |
| | Jan-21 | 100.0 | 100.0 | 93.0 |
| | Feb-21 | 100.0 | 100.0 | 94.0 |
| | Mar-21 | 100.0 | 100.0 | 94.4 |

| ANNUAL TREND | 2017/18 | 95.0 | 95.0 |
|--------------|---------|------|------|
| | 2018/19 | 95.4 | 95.4 |
| | 2019/20 | 89.5 | 89.5 |
| | 2020/21 | | 94.4 |

CSC 178: Monthly % of cases recorded in the Safeguarding Unit workbook where Child Protection strategy meeting / S47 start to initial child protection conference (ICPC) are within 15 days (CPP). Excludes transfer-in conferences.



CSC 176: % of cases where the initial child protection conference (ICPC) was within 15 days of the initiating strategy discussion / S47 start recorded in the Safeguarding Unit workbook (CPP). This EXCLUDES transfer-in conferences. Year to Date

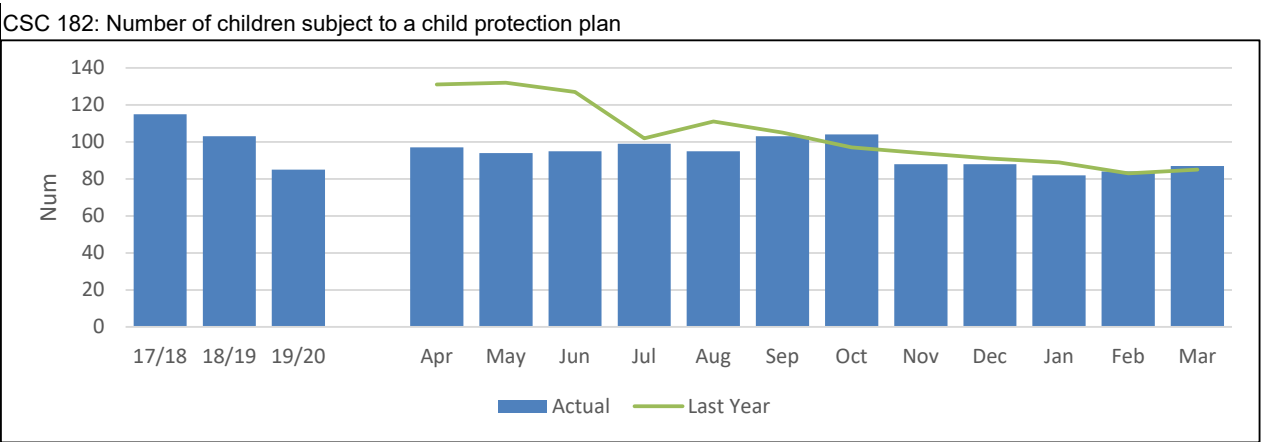


CHILD PROTECTION

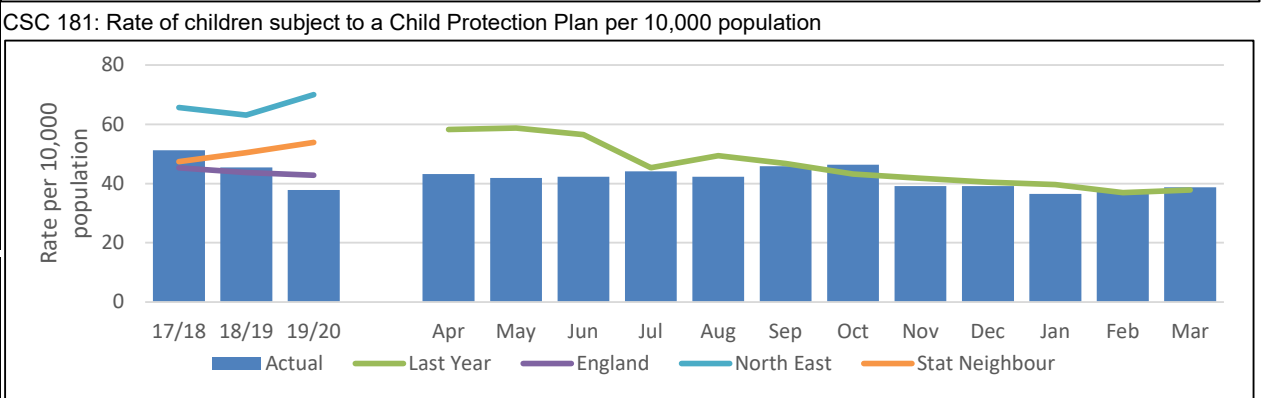
| | |
|-------------------|--|
| DEFINITION | Number of children subject to a Child Protection plan at the end of the month. |
|-------------------|--|

| | |
|-----------------------------|---|
| PERFORMANCE ANALYSIS | <p>87 children were subject to a Child Protection Plan (CPP) as at the end of March 2021. This is comparable to the 85 children open to a plan at the end of March 2020.</p> <p>Darlington currently has a 38.8 rate per 10,000 for children subject to a CPP which is lower than our statistical neighbour (53.9), regional (70.0) and national average (42.8) as reported in the 2020 LAIT.</p> |
|-----------------------------|---|

| | |
|---|---|
| CSC 182 | CSC 181 |
| Number of children subject to a child protection plan | Rate of children subject to a Child Protection Plan per 10,000 population |



| | | | |
|-----------------------------|--------|------|------|
| IN MONTH PERFORMANCE | | | |
| | Apr-20 | 97 | 43.2 |
| | May-20 | 94 | 41.9 |
| | Jun-20 | 95 | 42.3 |
| | Jul-20 | 99 | 44.1 |
| | Aug-20 | 95 | 42.3 |
| | Sep-20 | 103 | 45.9 |
| | Oct-20 | 104 | 46.3 |
| | Nov-20 | 88 | 39.2 |
| | Dec-20 | 88 | 39.2 |
| | Jan-21 | 82 | 36.5 |
| | Feb-21 | 84 | 37.4 |
| Mar-21 | 87 | 38.8 | |



| | | | |
|---------------------|-------------|-----|------|
| ANNUAL TREND | 2017/18 | 115 | 50.8 |
| | 2018/19 | 103 | 45.7 |
| | 2019/20 | 85 | 37.8 |
| | 2020/21 YTD | 87 | 38.8 |

CHILD PROTECTION - ALLOCATION & REVIEWS

DEFINITION

The percentage of children subject to a Child Protection Plan at the end of the month and who at that date had had a Plan continuously for at least the previous 3 months, whose case was reviewed within the required timescales.

Reviews are a key element in delivering Child Protection Plans and effective reviews should ensure the provision of good quality interventions. This indicator is a proxy for the measurement of effectiveness of the interventions provided to children subject to a Child Protection Plan. "Working Together to Safeguard Children" guidance requires that the first review should be within 3 months of the initial child protection conference and thereafter at intervals of no more than 6 months.

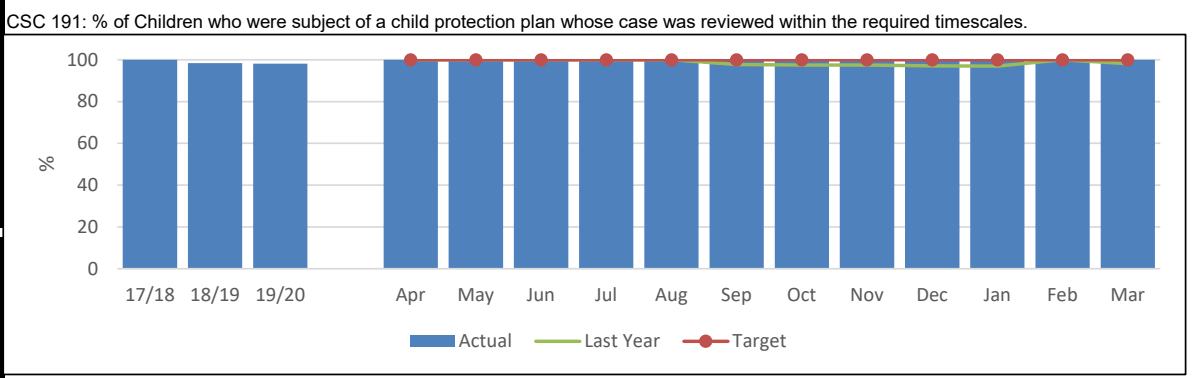
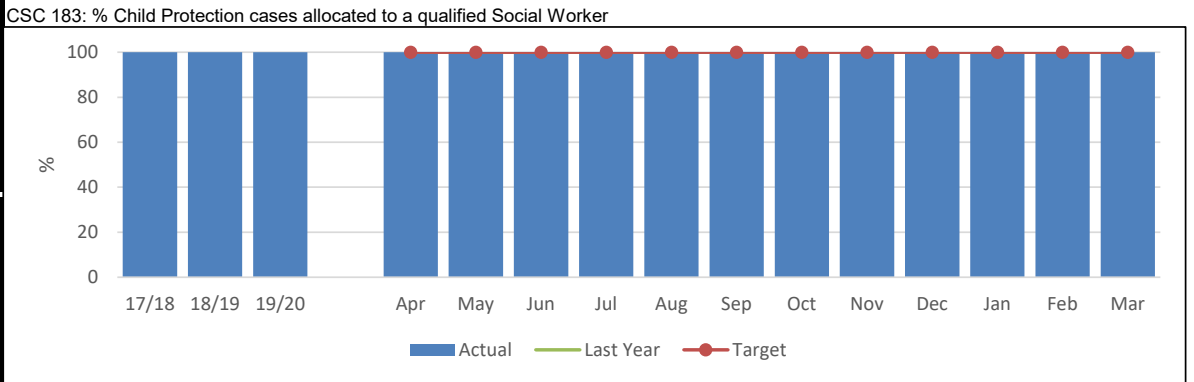
PERFORMANCE ANALYSIS

100% of Child Protection Cases were allocated to a qualified social worker.

100% of Child Protection reviews have been completed within the required timescales.

Performance remains higher than statistical neighbours (89.9%), regional (92.9%) and national averages (91.5%) as reported in the 2020 LAIT.

| | CSC 183 | CSC 191 |
|-----------------------------|---|---|
| | % Child Protection cases allocated to a qualified Social Worker | % of Children who were subject of a child protection plan whose case was reviewed within the required timescales. |
| IN MONTH PERFORMANCE | Target | 100 |
| | Apr-20 | 100.0 |
| | May-20 | 100.0 |
| | Jun-20 | 100.0 |
| | Jul-20 | 100.0 |
| | Aug-20 | 100.0 |
| | Sep-20 | 100.0 |
| | Oct-20 | 100.0 |
| | Nov-20 | 100.0 |
| | Dec-20 | 100.0 |
| | Jan-21 | 100.0 |
| | Feb-21 | 100.0 |
| | Mar-21 | 100.0 |
| ANNUAL TREND | 2017/18 | 100.0 |
| | 2018/19 | 100.0 |
| | 2019/20 | 100.0 |
| | 2020/21 YTD | 100.0 |

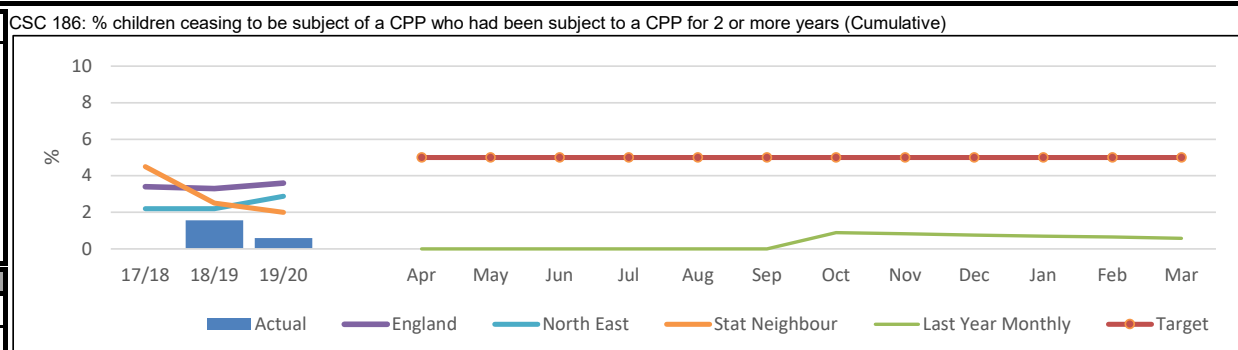


CHILD PROTECTION - TIME PERIODS

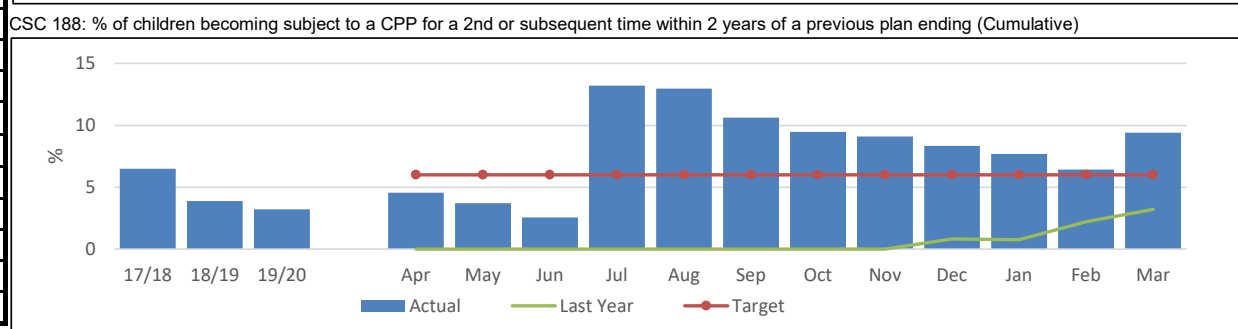
DEFINITION
 Percentage of children ceasing to be subject to a Child Protection Plan who had been subject to a Plan for 2 or more years, and percentage of children becoming subject to a Child Protection Plan for the 2nd or subsequent time within a) 2 years of a previous plan, and b) with a previous plan at any point.
 These indicators reflect the underlying principle that professionals should be working towards specified outcomes which, if implemented effectively, should lead to all children not needing to be the subject of a Child Protection Plan within a maximum of two years, or becoming subject of a Child Protection Plan for a second or subsequent time.

PERFORMANCE ANALYSIS
 At the end of March 2021 the figure for children becoming subject to a CP plan for a second or subsequent time within 2 years of the previous plan ending was 9.4% (this relates to 11 children from 4 families previously being subject to a CP plan). This is above our internal target of 6 %, however the family sizes should be taken into consideration which are similar to previous years.
 There has been no child who has been subject to a CP plan for 2 or more years and we continue to remain below our targets of 5%.

| CSC 186 | CSC 188 |
|--|--|
| % children ceasing to be subject of a CPP who had been subject to a CPP for 2 or more years (Cumulative) | % of children becoming subject to a CPP for a 2nd or subsequent time within 2 years of a previous plan ending (Cumulative) |



| IN MONTH PERFORMANCE | Target | 5% | 6% | |
|----------------------|--------|-----|-----|------|
| | Apr-20 | 0.0 | 0.0 | 4.6 |
| | May-20 | 0.0 | 0.0 | 3.7 |
| | Jun-20 | 0.0 | 0.0 | 2.6 |
| | Jul-20 | 0.0 | 0.0 | 13.2 |
| | Aug-20 | 0.0 | 0.0 | 13.0 |
| | Sep-20 | 0.0 | 0.0 | 10.6 |
| | Oct-20 | 0.0 | 0.0 | 9.5 |
| | Nov-20 | 0.0 | 0.0 | 9.1 |
| | Dec-20 | 0.0 | 0.0 | 8.3 |
| | Jan-21 | 0.0 | 0.0 | 7.7 |
| | Feb-21 | 0.0 | 0.0 | 6.4 |
| Mar-21 | 0.0 | 0.0 | 9.4 | |



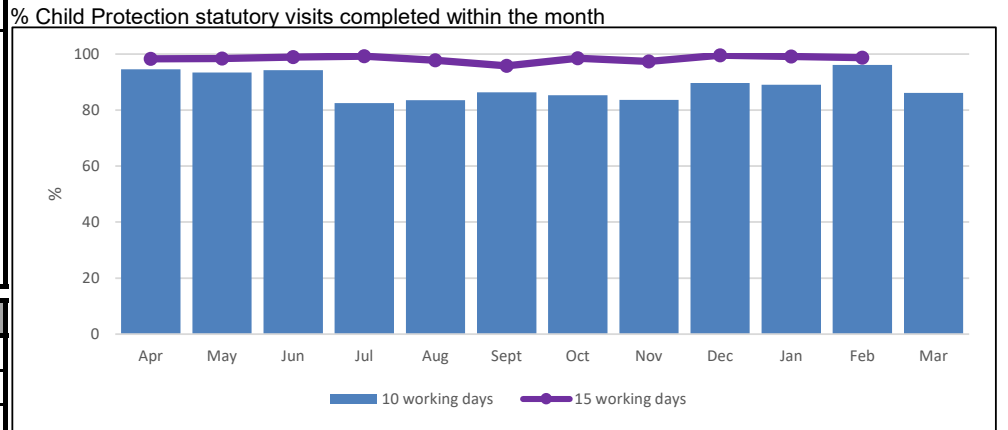
| ANNUAL TREND | 2017/18 | 2018/19 | 2019/20 | 2020/21 |
|--------------|---------|---------|---------|---------|
| | 0.0 | 1.6 | 0.6 | 0.0 |
| | 6.5 | 3.9 | 3.2 | 9.4 |

CHILD PROTECTION - STATUTORY VISITS

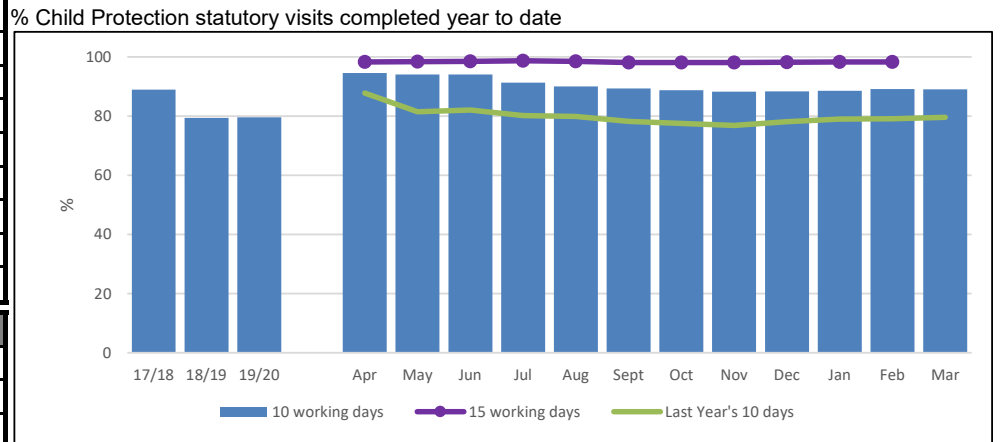
| | |
|-------------------|---|
| DEFINITION | Percentage of children subject to a Child Protection Plan who had all statutory visits carried out within timescales and percentage of Child Protection statutory visits completed within timescale monthly and year to date. |
|-------------------|---|

| | |
|-----------------------------|---|
| PERFORMANCE ANALYSIS | <p>89.0% of Child Protection statutory visits were completed within 10 working days during 2020/21 period. This is an improvement on the 79.6% that were completed in this timescale during 2019/20 and is in line with our 90% target.</p> <p>98.4% of the cumulative visits were completed within 15 working days during 2020/21.</p> |
|-----------------------------|---|

| CSC 252a | | CSC 252b | |
|---|---|--|--|
| % Child Protection statutory visits completed within 10 working days within the month | % Child Protection statutory visits completed within 15 working days within the month | % Child Protection statutory visits completed within 10 working days year to date (cumulative) | % Child Protection statutory visits completed within 15 working days year to date (cumulative) |



| IN MONTH PERFORMANCE | Target | 90 | 90 | 90 | 90 |
|-----------------------------|--------|------|------|------|------|
| | Apr-20 | 94.6 | 98.3 | 94.6 | 98.3 |
| | May-20 | 93.4 | 98.4 | 94.0 | 98.4 |
| | Jun-20 | 94.3 | 98.9 | 94.1 | 98.5 |
| | Jul-20 | 82.5 | 99.2 | 91.3 | 98.7 |
| | Aug-20 | 83.6 | 97.8 | 90.0 | 98.5 |
| | Sep-20 | 86.3 | 95.8 | 89.4 | 98.1 |
| | Oct-20 | 85.3 | 98.5 | 88.8 | 98.1 |
| | Nov-20 | 83.7 | 97.4 | 88.2 | 98.1 |
| | Dec-20 | 89.7 | 99.6 | 88.4 | 98.2 |
| | Jan-21 | 90.2 | 99.1 | 88.5 | 98.3 |
| | Feb-21 | 96.1 | 98.7 | 89.2 | 98.3 |
| Mar-21 | 86.1 | 99.5 | 89.0 | 98.4 | |



| ANNUAL TREND | 2017/18 | 88.9 | | 88.9 | |
|---------------------|---------|------|------|------|------|
| | 2018/19 | 79.3 | 95.7 | 79.3 | 95.7 |
| | 2019/20 | 79.6 | 92.0 | 79.6 | 93.8 |
| | 2020/21 | 89.0 | 98.4 | 89.0 | 98.4 |

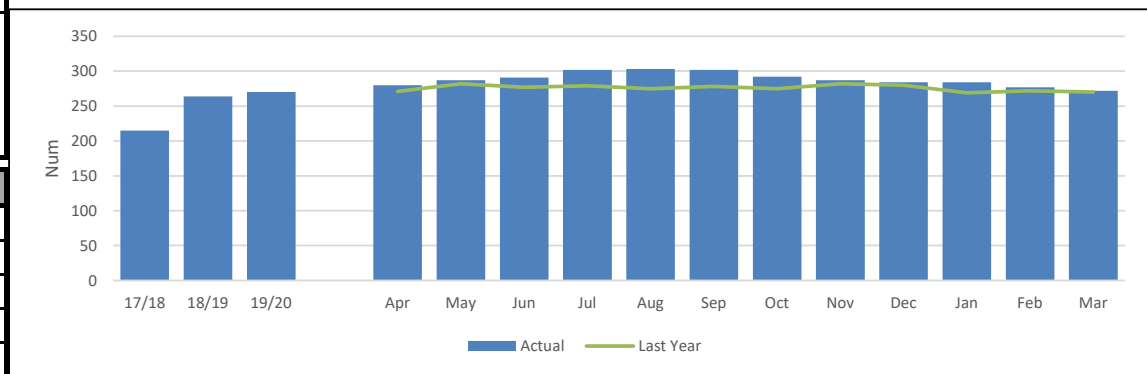
CHILDREN IN CARE

| | |
|-------------------|--|
| DEFINITION | Number of Children in Care at the end of each month. |
|-------------------|--|

| | |
|-----------------------------|--|
| PERFORMANCE ANALYSIS | <p>272 children are currently in care as at March 2021 which is comparable to the number of children (270) that were in care as at March 2020.</p> <p>The rate of Children in Care (CiC) per 10,000 population is currently at 121.1 which is higher than our statistical neighbours (100.3), regional (108.0) and national average (67.0).</p> <p>The courts have been closed for a considerable time since March 2020 due to the Covid-19 pandemic, and when open are hearing a smaller number of cases. As a result, there have been less cases able to be progressed to ceasing to be in care due to awaiting action such as adoption orders being granted or care orders being discharged by the court.</p> |
|-----------------------------|--|

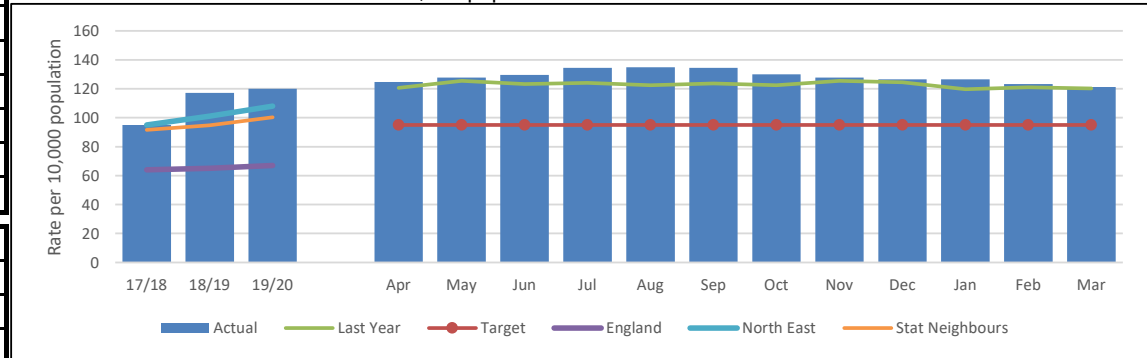
| | |
|----------------------------------|--|
| CSC 201 | CSC 200 |
| Total number of Children in Care | Rate of Children in Care Per 10,000 population |

CSC 201: Total number of Children in Care



| | | | |
|-----------------------------|---------------|-----|-----------|
| IN MONTH PERFORMANCE | Target | | 95 |
| | Apr-20 | 280 | 124.7 |
| | May-20 | 287 | 127.8 |
| | Jun-20 | 291 | 129.6 |
| | Jul-20 | 302 | 134.5 |
| | Aug-20 | 303 | 134.9 |
| | Sep-20 | 302 | 134.5 |
| | Oct-20 | 292 | 130.0 |
| | Nov-20 | 287 | 127.8 |
| | Dec-20 | 284 | 126.5 |
| | Jan-21 | 284 | 126.5 |
| | Feb-21 | 277 | 123.4 |
| | Mar-21 | 272 | 121.1 |

CSC 200: Rate of Children in Care Per 10,000 population



| | | | |
|---------------------|---------|-----|-------|
| ANNUAL TREND | 2017/18 | 215 | 95.0 |
| | 2018/19 | 264 | 117.2 |
| | 2019/20 | 270 | 120.1 |
| | 2020/21 | 272 | 121.1 |

CHILDREN IN CARE - ALLOCATION & REVIEWS

DEFINITION

The percentage of Children in Care cases which should have been reviewed during the year ending 31 March that were reviewed on time during the year and the percentage of Children in Care cases that were allocated to a qualified Social Worker at the end of the month.

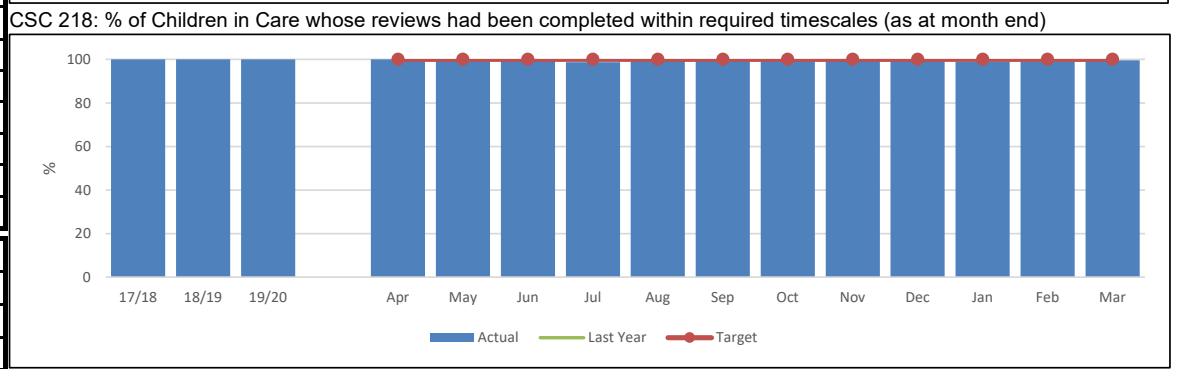
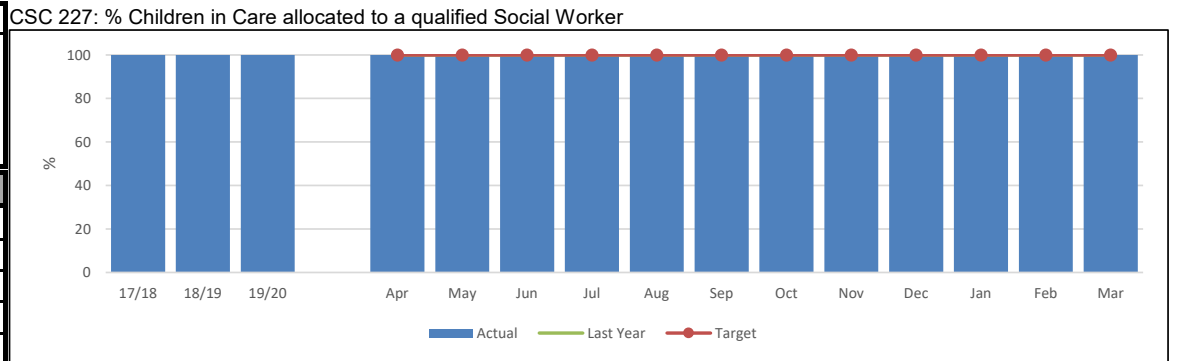
To improve compliance with local authorities' legal requirements under the Review of Children's cases Regulations 1991. The purpose of the review is to consider the plan for the child's welfare, to monitor the progress of the plan and amend it as necessary in light of changed information and circumstances. The statutory intervals are within 20 working days of placement, then within 3 months and 6 monthly thereafter, but reviews may be rescheduled or held inside these intervals if there are significant changes to the child's care plan.

PERFORMANCE ANALYSIS

100.0% of Children in Care (CiC) are allocated to a qualified social worker.

99.6% of the reviews have been completed within the required timescales during 2020/21.

| | | CSC 227 | CSC 218 |
|-----------------------------|---------------|---|---|
| | | % Children in Care allocated to a qualified Social Worker | % of Children in Care whose reviews had been completed within required timescales (as at month end) |
| IN MONTH PERFORMANCE | Target | 100 | 100 |
| | Apr-20 | 100.0 | 100.0 |
| | May-20 | 100.0 | 100.0 |
| | Jun-20 | 100.0 | 100.0 |
| | Jul-20 | 100.0 | 98.7 |
| | Aug-20 | 100.0 | 99.6 |
| | Sep-20 | 100.0 | 100.0 |
| | Oct-20 | 100.0 | 99.6 |
| | Nov-20 | 100.0 | 99.6 |
| | Dec-20 | 100.0 | 99.6 |
| | Jan-21 | 100.0 | 98.9 |
| | Feb-21 | 100.0 | 99.6 |
| Mar-21 | 100.0 | 99.6 | |
| ANNUAL TREND | 2017/18 | 100.0 | 100.0 |
| | 2018/19 | 100.0 | 100.0 |
| | 2019/20 | 100.0 | 100.0 |
| | 2020/21 | 100.0 | 99.6 |



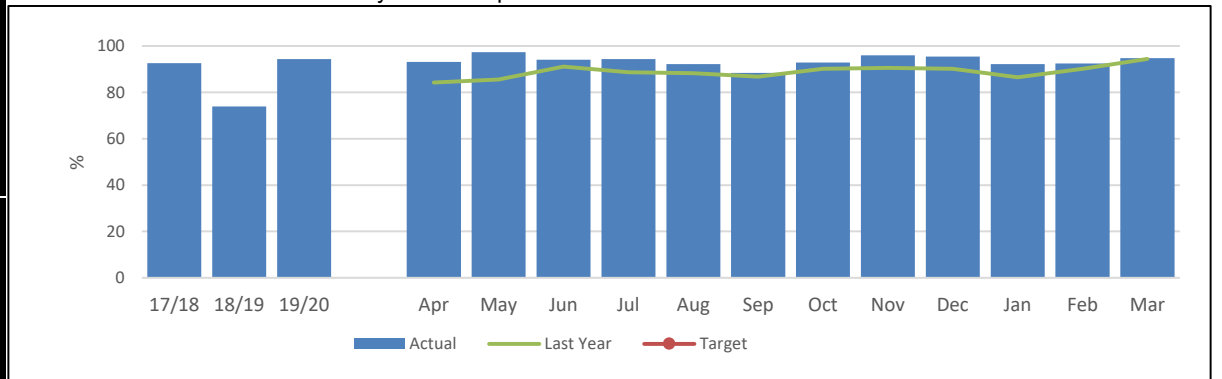
CHILDREN IN CARE - STATUTORY VISITS

| | |
|-------------------|---|
| DEFINITION | Percentage of Children in Care who had all statutory visits completed within required timescales and percentage of Children in Care's statutory visits completed within timescales each month and year to date. |
|-------------------|---|

| | |
|-----------------------------|--|
| PERFORMANCE ANALYSIS | <p>93.1% of Child in Care (CiC) statutory visits have been completed in timescale during 2020/21. This is an increase on the 89.0% CiC statutory visits completed in timescale during 2019/20. There has also been an 11.6% increase in the number of visits taking place from 3,456 during 2019/20 to 3,858.</p> <p>We are above our internal target of 90% of visits completed in timescale.</p> |
|-----------------------------|--|

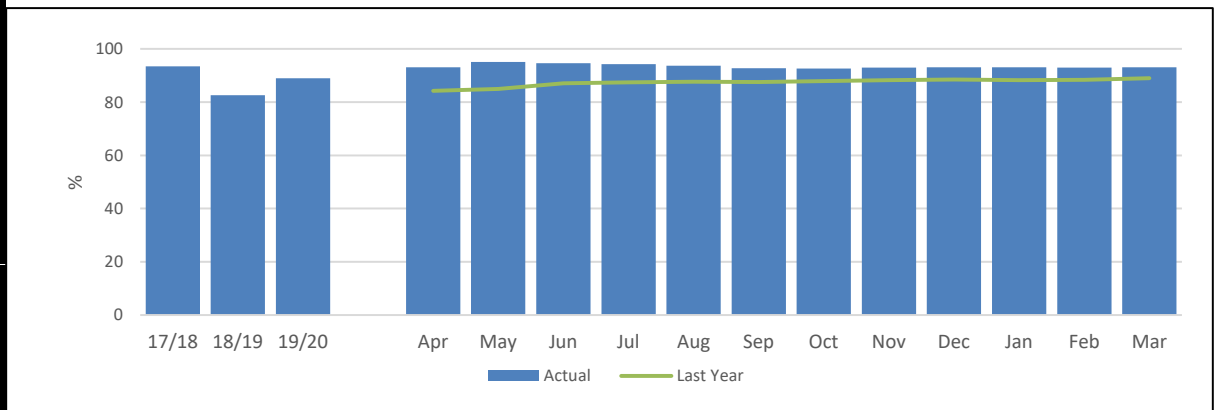
| CSC 260a | CSC 260b |
|--|--|
| % Child in Care statutory visits completed in timescale within the month | % Child in Care statutory visits completed in timescale year to date |

CSC 260a: % Child in Care statutory visits completed in timescale within the month



| IN MONTH PERFORMANCE | Target | 90 | 90 |
|----------------------|---------|------|------|
| | Apr-20 | 93.1 | 93.1 |
| | May-20 | 97.3 | 95.1 |
| | Jun-20 | 94.0 | 94.6 |
| | Jul-20 | 94.3 | 94.3 |
| | Aug-20 | 92.2 | 93.6 |
| | Sep-20 | 88.4 | 92.7 |
| | Oct-20 | 92.8 | 92.6 |
| | Nov-20 | 96.0 | 92.9 |
| | Dec-20 | 95.5 | 93.1 |
| | Jan-21 | 92.2 | 93.1 |
| | Feb-21 | 92.4 | 93.0 |
| | Mar-21 | 94.8 | 93.1 |
| ANNUAL TREND | 2017/18 | 93.4 | 93.4 |
| | 2018/19 | 82.6 | 82.6 |
| | 2019/20 | 89.0 | 89.0 |
| | 2020/21 | | 93.1 |

CSC 260b: % Child in Care statutory visits completed in timescale year to date



CHILDREN IN CARE - PLACEMENTS

DEFINITION

Of those Children in Care at the point in time (excluding series of short-term placements), the percentage that had 3 or more separate placements in the previous 12 months; who had been in their current placement for 2 or more years. and who were placed more than 20 miles away from their home address.

On the whole stability is associated with better outcomes; placement instability has been highlighted as a key barrier to improving educational outcomes. Proper assessment and an adequate choice of placements to meet the varied needs of different children are essential if appropriate stable placements are to be made. Inappropriate placements often break down and lead to frequent moves. Nevertheless, the circumstances of some individual children will require 3 or more separate placements during a year if they and others are to be kept safe.

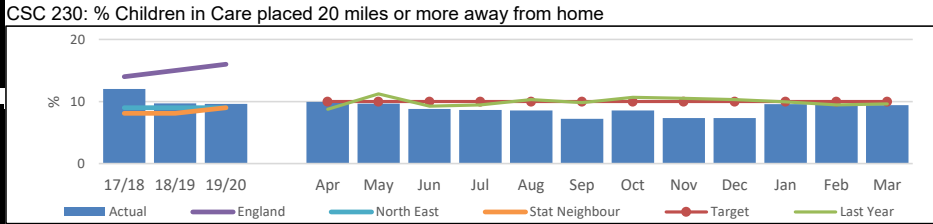
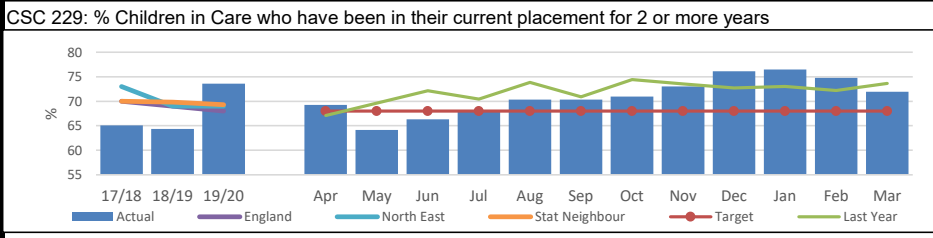
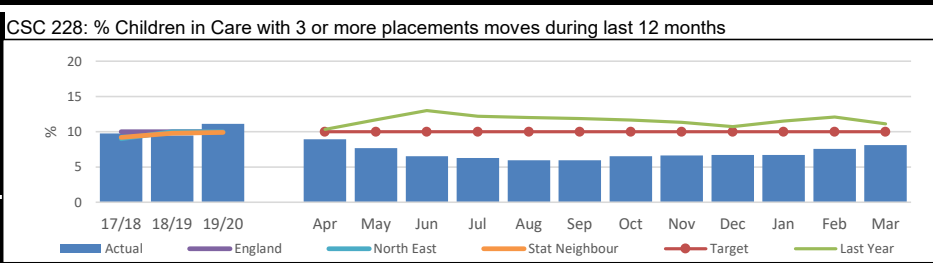
PERFORMANCE ANALYSIS

8.1% of Children in Care (CiC) as at March 2021 have had 3 or more placements within the previous 12 months. This is below our target of 10.0% and our statistical neighbours (9.9%) regional (10.0%) and national average (10.0%) as recorded for 2020 in LAIT. All children who are placed over 20 miles away are confirmed as appropriate and for the benefit of the child by the head of service each month.

As at March 2021, 71.9% of our children in care, aged under 16 (who have been looked after for at least 2.5 years), have been in their current placement continuously for at least 2 years. This is positively above our target of 68.0% and our statistical neighbours (69.3%), regional (69.0%) and national average (68.0%).

9.4% of our children in care have been placed 20 or more miles away from home as at March 2021 which is similar to that at March 2020 (9.6%) and below our target of 10.0%.

| | CSC 228 | CSC 229 | CSC 230 | |
|-----------------------------|--|---|---|------|
| | % Children in Care with 3 or more placements moves during last 12 months | % Children in Care who have been in their current placement for 2 or more years | % Children in Care placed 20 miles or more away from home | |
| | Target | 10% | 68% | |
| | 10% | 68% | 10% | |
| IN MONTH PERFORMANCE | Apr-20 | 8.9 | 69.2 | 10.0 |
| | May-20 | 7.7 | 64.1 | 9.6 |
| | Jun-20 | 6.5 | 66.3 | 8.8 |
| | Jul-20 | 6.3 | 68.1 | 8.6 |
| | Aug-20 | 5.9 | 70.3 | 8.6 |
| | Sep-20 | 6.0 | 70.3 | 7.2 |
| | Oct-20 | 6.5 | 71.0 | 8.5 |
| | Nov-20 | 6.6 | 73.0 | 7.3 |
| | Dec-20 | 6.7 | 76.1 | 7.4 |
| | Jan-21 | 6.7 | 76.5 | 9.6 |
| | Feb-21 | 7.6 | 74.8 | 9.5 |
| | Mar-21 | 8.1 | 71.9 | 9.4 |
| ANNUAL TREND | 2017/18 | 9.8 | 65.1 | 12.0 |
| | 2018/19 | 9.5 | 64.4 | 9.7 |
| | 2019/20 | 11.1 | 73.6 | 9.6 |
| | 2020/21 | 8.1 | 71.9 | 9.4 |



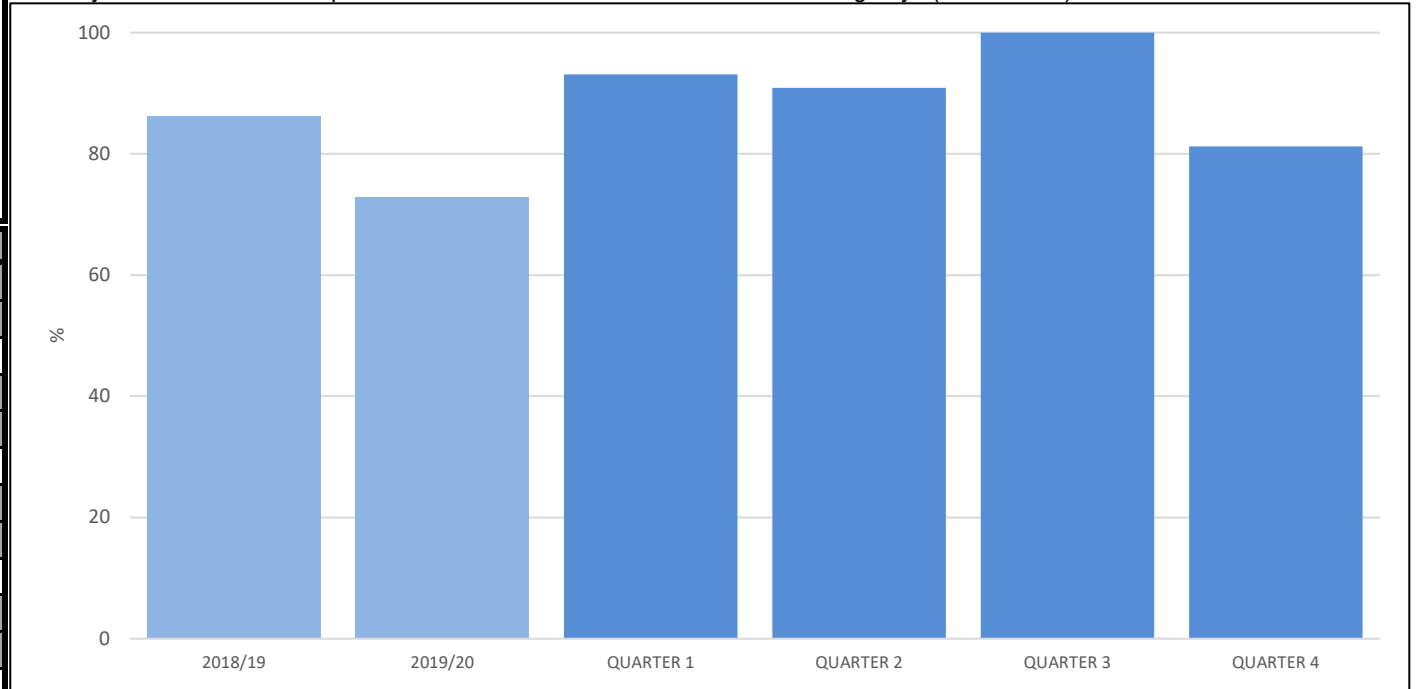
CHILDREN IN CARE - INITIAL HEALTH ASSESSMENTS

| | |
|-------------------|--|
| DEFINITION | Percentage of Initial Health Assessments completed within 20 working days of a child coming into our care year to date (data from Health), and percentage of IHA forms returned to Health within 7 working days. |
|-------------------|--|

| | |
|-----------------------------|--|
| PERFORMANCE ANALYSIS | Health report 90.9% of the children, newly into care, were seen by CDDFT within 20 working days for an initial health assessment during 2020/21. |
|-----------------------------|--|

% Newly in to care with a completed Initial Health Assessment within 20 working days (from Health)

% Newly in to care with a completed Initial Health Assessment within 20 working days (from Health)



| | | |
|-----------------------------|---------------|-----------|
| IN MONTH PERFORMANCE | Target | 95 |
| | Apr-20 | |
| | May-20 | |
| | Jun-20 | 93.1 |
| | Jul-20 | |
| | Aug-20 | |
| | Sep-20 | 90.9 |
| | Oct-20 | |
| | Nov-20 | |
| | Dec-20 | 100.0 |
| | Jan-21 | |
| | Feb-21 | |
| Mar-21 | 81.3 | |
| ANNUAL TREND | 2017/18 | 82.0 |
| | 2018/19 | 86.2 |
| | 2019/20 | 72.9 |
| | 2020/21 | 90.9% |

CHILDREN IN CARE - HEALTH ASSESSMENTS

DEFINITION
 Of the Children in Care (CiC) at 31 March who had been in care continuously for at least 12 months, the percentage who have had their Review Health Assessment (RHA) completed and the percentage who have an up to date Health Check.
 Children in Care share many of the same health risks and problems as their peers, but often to a greater degree. These indicators track the participation of our Children in Care's health as a proxy for monitoring the general health and wellbeing of the children, as well as providing a check on the effectiveness of joint working with Health to secure good health outcomes for Children in Care.

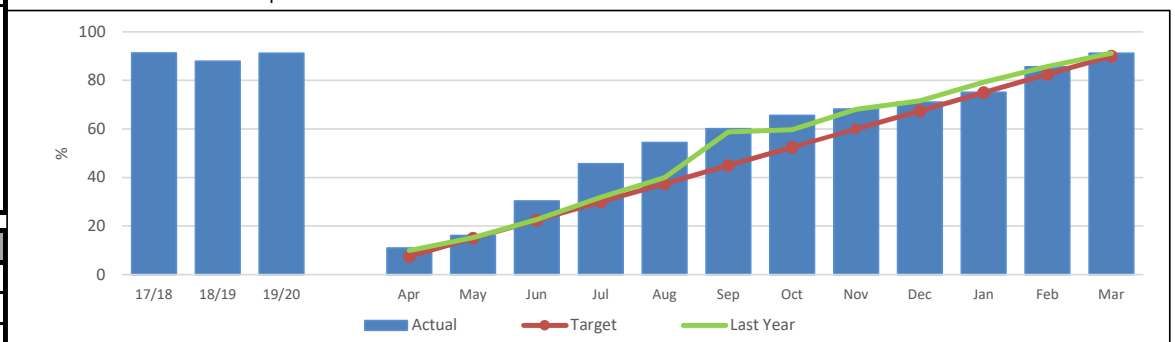
PERFORMANCE ANALYSIS
 91.2% of children due a review health assessment during the 2020/21 period have had one completed. This percentage is comparable to the end of 2019/20 (93.3%) and is above our 90% target.

| | | |
|---|--|---|
| CSC 250 | | CSC 250b |
| The % of CiC who have an up to date Health Checks (excludes any who will turn 18 before 31st March) | The % of CiC who were due a Review Health Check (year to date) who refused to engage | The % of Children in Care who were due a Review Health Check year to date and were completed and recorded |

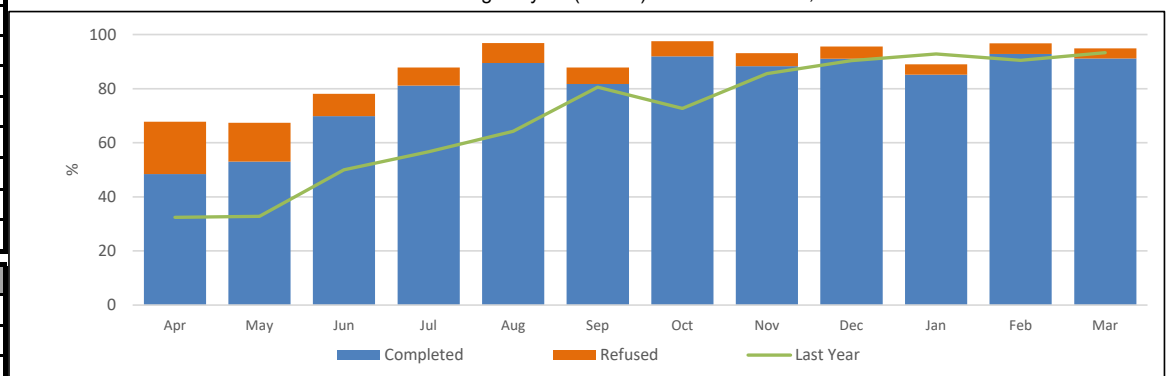
| IN MONTH PERFORMANCE | Target | 90% | | 90% |
|-----------------------------|--------|------|------|------|
| | Apr-20 | 11.0 | 19.4 | 48.4 |
| | May-20 | 16.1 | 14.3 | 53.1 |
| | Jun-20 | 30.3 | 8.2 | 69.9 |
| | Jul-20 | 45.7 | 6.7 | 81.1 |
| | Aug-20 | 54.4 | 7.4 | 89.5 |
| | Sep-20 | 60.1 | 6.1 | 81.7 |
| | Oct-20 | 65.6 | 5.6 | 91.9 |
| | Nov-20 | 68.2 | 4.8 | 88.3 |
| | Dec-20 | 71.1 | 4.5 | 91.1 |
| | Jan-21 | 75.1 | 3.8 | 85.2 |
| | Feb-21 | 85.7 | 3.9 | 92.8 |
| | Mar-21 | 91.2 | 3.7 | 91.2 |

| ANNUAL TREND | 2017/18 | 91.3 | | |
|---------------------|---------|------|-----|------|
| | 2018/19 | 87.9 | | 87.9 |
| | 2019/20 | 91.2 | 3.1 | 93.3 |
| | 2020/21 | 91.2 | 3.7 | 91.2 |

CSC 250: % of CiC who are up to date for a Review Health Check at 31st March



CSC 250b: % of CiC due a Review Health Check during the year (to date) that have had one, and % that refused



CHILDREN IN CARE - DENTAL HEALTH ASSESSMENTS

DEFINITION

Of the Children in Care (CiC) at 31 March who had been in care continuously for at least 12 months, the percentage who had had their teeth checked by a dentist during the previous 12 months, and the percentage who had had an annual health check during the previous 12 months.

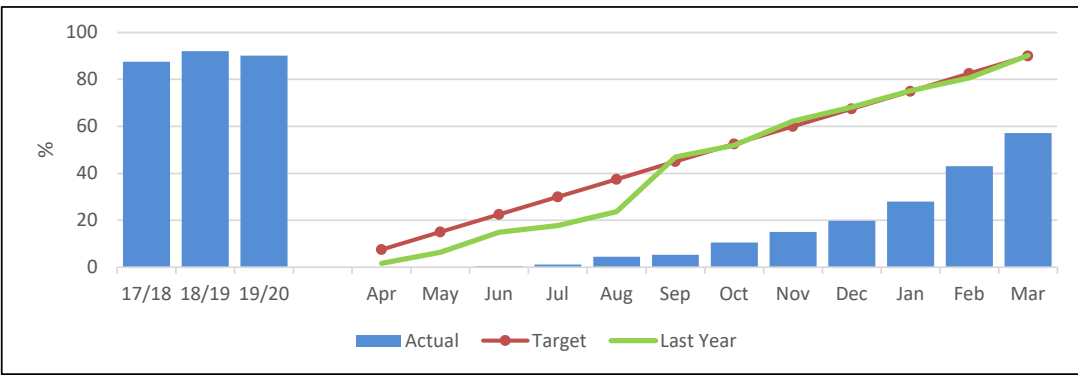
Children in Care share many of the same health risks and problems as their peers, but often to a greater degree. These indicators track the participation of our Children in Care with dental checks as a proxy for monitoring the general health and wellbeing of the children, as well as providing a check on the effectiveness of joint working with Health to secure good health outcomes for Children in Care.

PERFORMANCE ANALYSIS

57.2% of children due a dental check assessment had one completed in 2020/21. This is below our target of 90% but was expected due to the long closures of dental practises and limited access when opened during 2020/21 due to the Covid-19 pandemic.

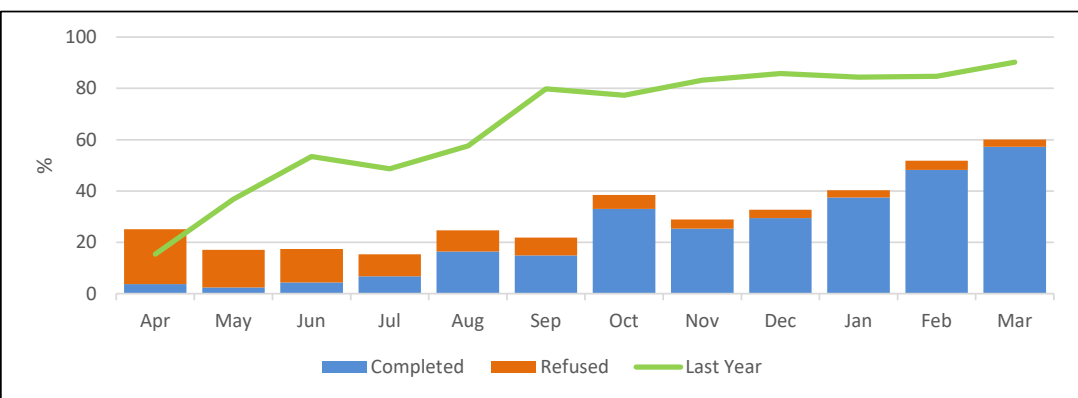
| | | |
|---|--|---|
| CSC 251 | | CSC 251d |
| The % of Children in Care with up to date Dental Checks (excludes any who will turn 18 before 31st March) | The % of Children in Care who were due a Dental Check (year to date) who refused to engage | The % of Children in Care who were due a Dental Check year to date and were up to date by the report date |

CSC 251: % of Children in Care who are up to date for a Dental Check at 31st March



| IN MONTH PERFORMANCE | Target | 90% | | 90% | |
|----------------------|--------|------|------|------|------|
| | Apr-20 | 0.0 | 21.4 | | 3.7 |
| | May-20 | 0.0 | 14.6 | | 2.4 |
| | Jun-20 | 0.4 | 13.0 | | 4.4 |
| | Jul-20 | 1.2 | 8.5 | | 6.8 |
| | Aug-20 | 4.4 | 8.2 | | 16.4 |
| | Sep-20 | 5.2 | 6.9 | | 14.9 |
| | Oct-20 | 10.5 | 5.4 | | 33.0 |
| | Nov-20 | 15.0 | 3.5 | | 25.4 |
| | Dec-20 | 19.7 | 3.2 | | 29.5 |
| | Jan-21 | 28.0 | 2.9 | | 37.4 |
| | Feb-21 | 43.1 | 3.6 | | 48.2 |
| Mar-21 | 57.2 | 2.8 | | 57.2 | |

CSC 251d: % of Children in Care due a Dental Check (to date) that have had one, and the % that refused



| ANNUAL TREND | 2017/18 | 87.5 | | |
|--------------|---------|------|-----|------|
| | 2018/19 | 92.1 | | 92.1 |
| | 2019/20 | 90.2 | 3.1 | 90.2 |
| | 2020/21 | 57.2 | 2.8 | 57.2 |

| CARE LEAVERS | |
|-----------------------------|--|
| DEFINITION | <p>The percentage of 'former relevant' care leavers aged 19-21 who were in suitable accommodation at their most recent contact, and the percentage who were not in employment, education or training at their most recent contact. Published data is included for comparison however data submitted to DfE by Local Authorities captures the young person's status around their 19th, 20th, or 21st birthday each year rather than the latest available information.</p> <p>This measures accommodation and employment outcomes for young people formerly in care - a key group at risk of social exclusion. It is intended to increase the proportion of former care leavers who are in suitable accommodation and employment, education or training.</p> |
| PERFORMANCE ANALYSIS | <p>98.1% of our care leavers were in suitable accommodation at the end of March 2021. The 1.9% of care leavers in unsuitable accommodation was due to being in custody. This is above our target of 95%.</p> <p>Of the young people (aged 19-21) as at March 2021 who were not in education, employment or training (NEET).</p> <ul style="list-style-type: none"> • 5.3% NEET because of illness or disability • 8.8% NEET because of other circumstances • 10.5% NEET because of pregnancy or parenting. <p>This equates to 24.6% of our care leavers which is below our internal target of 30% NEET.</p> |

| | CSC 286 | | CSC 294 | |
|-----------------------------|---------|--|---------|---------------------|
| | Target | % Care Leavers in suitable accommodation | Target | % Care Leavers NEET |
| | | 95% | | 30% |
| IN MONTH PERFORMANCE | Apr-20 | 100.0 | 31.7 | |
| | May-20 | 100.0 | 31.8 | |
| | Jun-20 | 100.0 | 29.6 | |
| | Jul-20 | 100.0 | 28.9 | |
| | Aug-20 | 100.0 | 25.5 | |
| | Sep-20 | 100.0 | 25.0 | |
| | Oct-20 | 100.0 | 26.5 | |
| | Nov-20 | 95.9 | 24.5 | |
| | Dec-20 | 98.0 | 26.5 | |
| | Jan-21 | 98.0 | 22.0 | |
| | Feb-21 | 98.1 | 23.1 | |
| | Mar-21 | 98.1 | 24.6 | |
| ANNUAL TREND | 2017/19 | 94.9 | 32.2 | |
| | 2018/19 | 96.4 | 25.0 | |
| | 2019/20 | 98.2 | 28.1 | |
| | 2020/21 | 98.1 | 24.6 | |

